

Ultrasound-guided Knee Arthrocentesis

HIGHLAND EMERGENCY

DEPARTMENT OF EMERGENCY MEDICINE
ALAMEDA HEALTH SYSTEM - HIGHLAND HOSPITAL



Arun Nagdev, MD
@NagdevArun

STEP 1

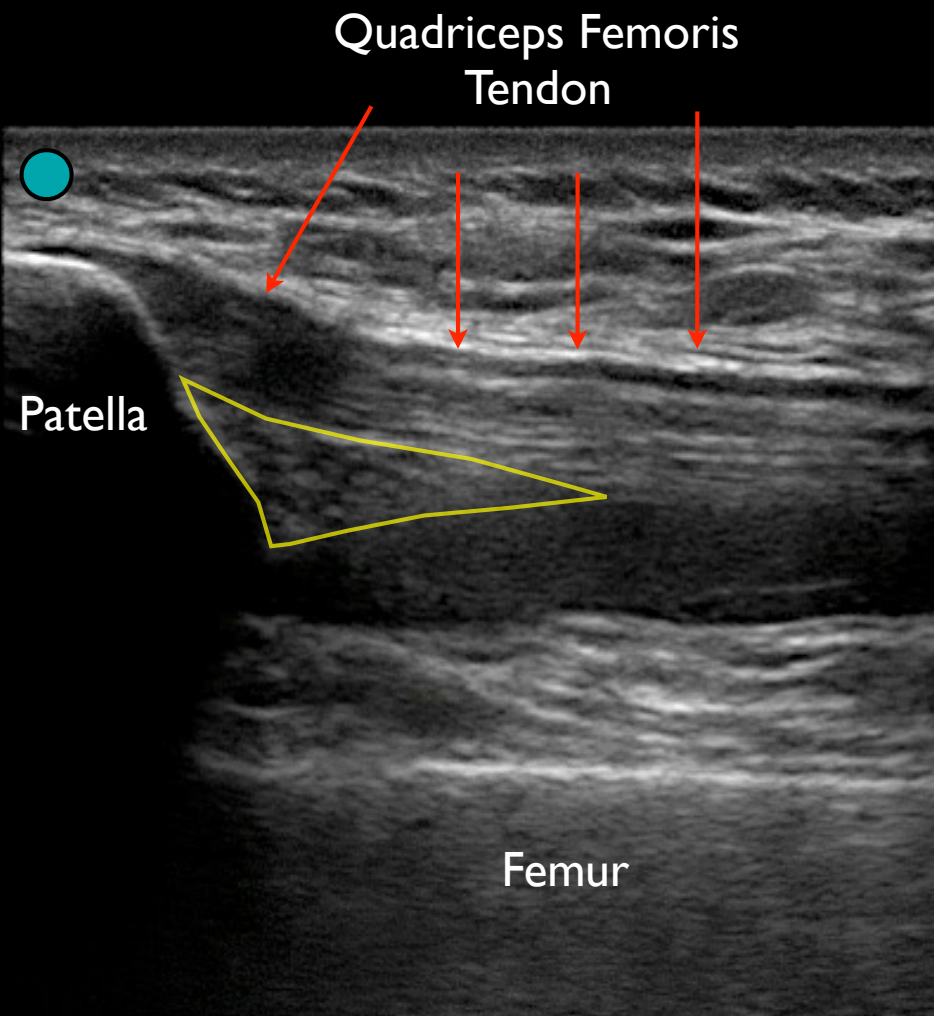
Linear Probe

Above the patella (probe marker Caudal)



STEP 2

Locate the effusion in the suprapatella fossa
Anechoic effusion below fat pad (yellow)



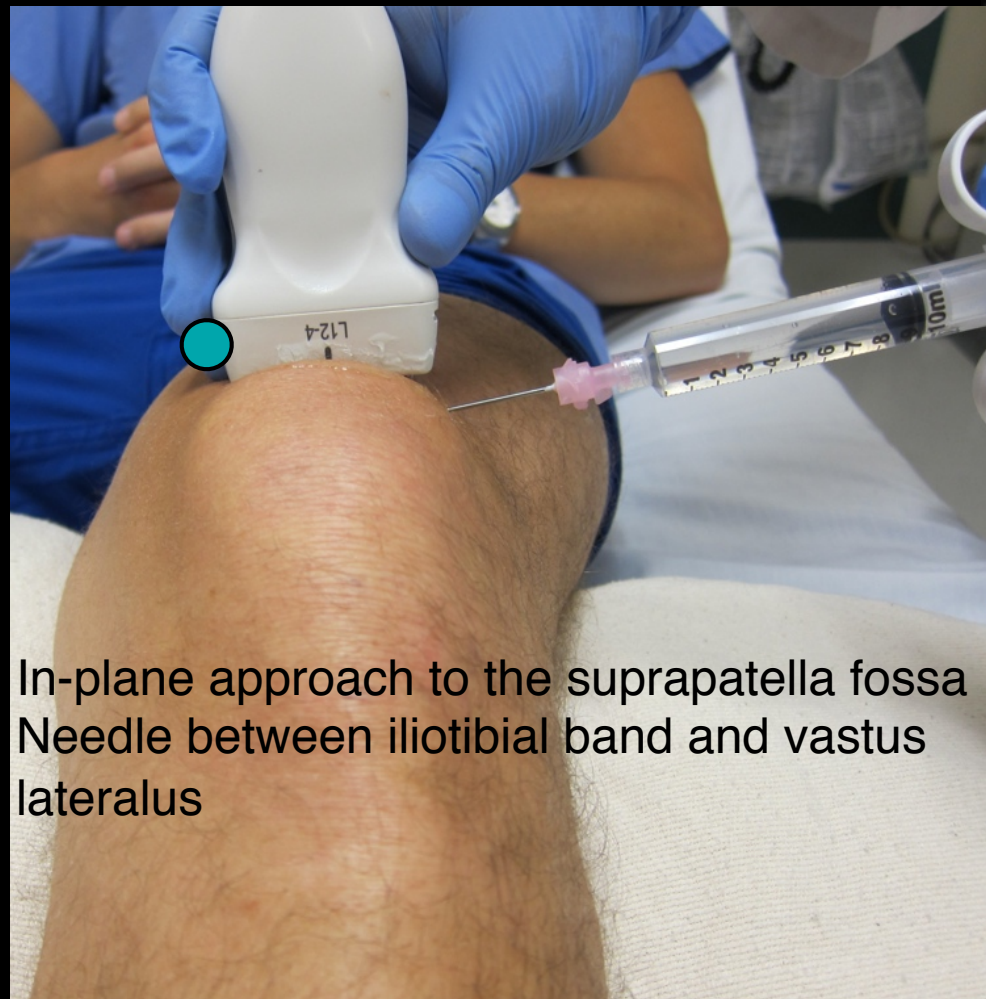
STEP 3

Rotate probe just above patella
Probe marker to the patient's right

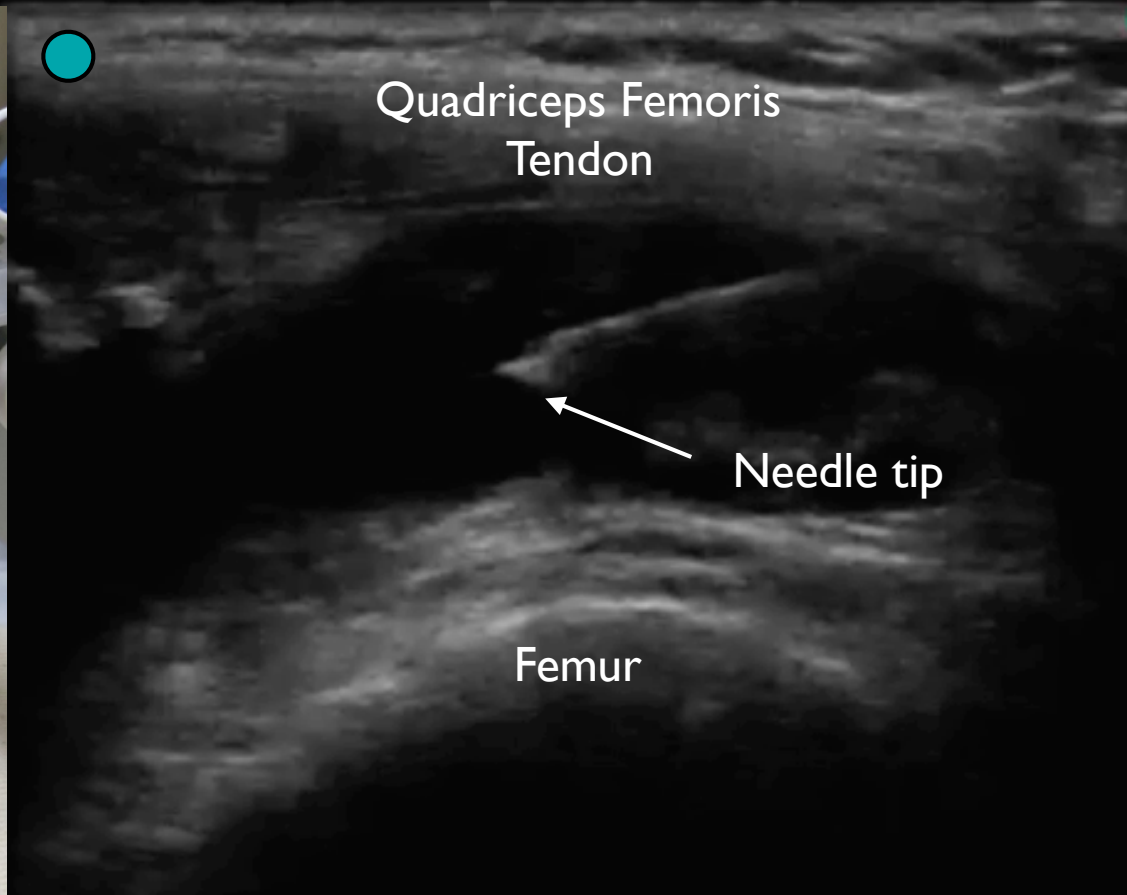


STEP 4

In-plane approach to the suprapatella fossa Needle between iliotibial band and vastus lateralis



In-plane approach to the suprapatella fossa
Needle between iliotibial band and vastus
lateralus



Quadriceps Femoris
Tendon

Needle tip

Femur